

Please read these instructions to enhance your knowledge of the portable gas heater.

ACTION TO BE TAKEN IN THE EVENT OF BURN-BACK (FIRE IN BURNER TUBE OR CHAMBER)

In the event of a burn-back, where the flame burns back to the jet, immediately turn the gas supply off at the control valve on the panel. After ensuring the flame is extinguished, wait for 1 minute and re-light the appliance in the normal manner. Should the appliance again burn back, close the control valve and call a service technician. Do not use the appliance again until the service technician has declared that it is safe to do so.

SAFETY PRECAUTIONS

1. Please check each component against the parts list prior to assembly. Please read all safety warnings and assembly instructions before use.
2. Failure to follow the instructions may cause personal injury and /or property damage.
3. Please handle all parts or components with care to avoid injury.
4. Never use in unventilated or enclosed areas to avoid endangering your life. This gas heater consumes air.
5. Always position the heater on a steady, level and heat proof surface, Keep the heater away from wooden fences, overhanging tree branches, and other inflammable materials.
6. During operation, this product can be a source of ignition. Never use the heater in places that contain or may contain volatile or airborne combustibles, or products such as gasoline, solvents, paint thinners, dust particles, or unknown chemicals.
7. Only a 220g gas cartridge can be used for the heater.
8. Never leave the heater unattended when it is hot or in use.
9. Keep out of reach of children and pets.
10. Never attempt to move the heater when in use.
11. The accessible parts can be very hot. Always use oven mitts/oven gloves.
12. When you smell a gas leak or hear a "hissing" sound, turn the control knob to the "O" position and release the lever. Do not use the heater if the problem cannot be solved, and contact your local gas dealer.
13. It is not permitted to modify any part of the heater.
14. Keep the fire extinguisher handy.

TECHNICAL DATA

Gas type: Liquefied butane gas

Gas cartridge: 220g Butane, butane-propane bayonet type gas cartridge

Consumption (max): 145g/h

Power approx (max): 2.0kW

Injector Size: 0.50mm

Overall dimensions: W330mm, D130mm, H330mm

USE OUTDOORS ONLY

READ THE INSTRUCTIONS BEFORE USE

This appliances shall only be used with a bayonet type gas cartridge

Do not use the appliance which if leaking, damaged or which does not operate properly.

If there is a leak on your appliance (smell of gas) take it outside immediately into a well ventilated flame free location where the leak may be detected and stopped. If you wish to check for leaks on your appliance do it outside. Do not try to detect leaks using a flame, use soapy water.

Accessible parts may be very hot. Keep your children away from the appliance

If there is a leak on your appliance (smell of gas), take it outside immediately into a well ventilated flame free location where the leak may be detected and stopped. If you wish to check for leaks on your appliance, do it outside.

Do not try to detect leaks using a flame, use soapy water

Do not use an appliance which is leaking, damaged or which does not operate properly

CAUTION: accessible parts may become very hot, Keep young children away from the appliance do not modify the appliance. Check the seals before connecting a new gas container to the appliance

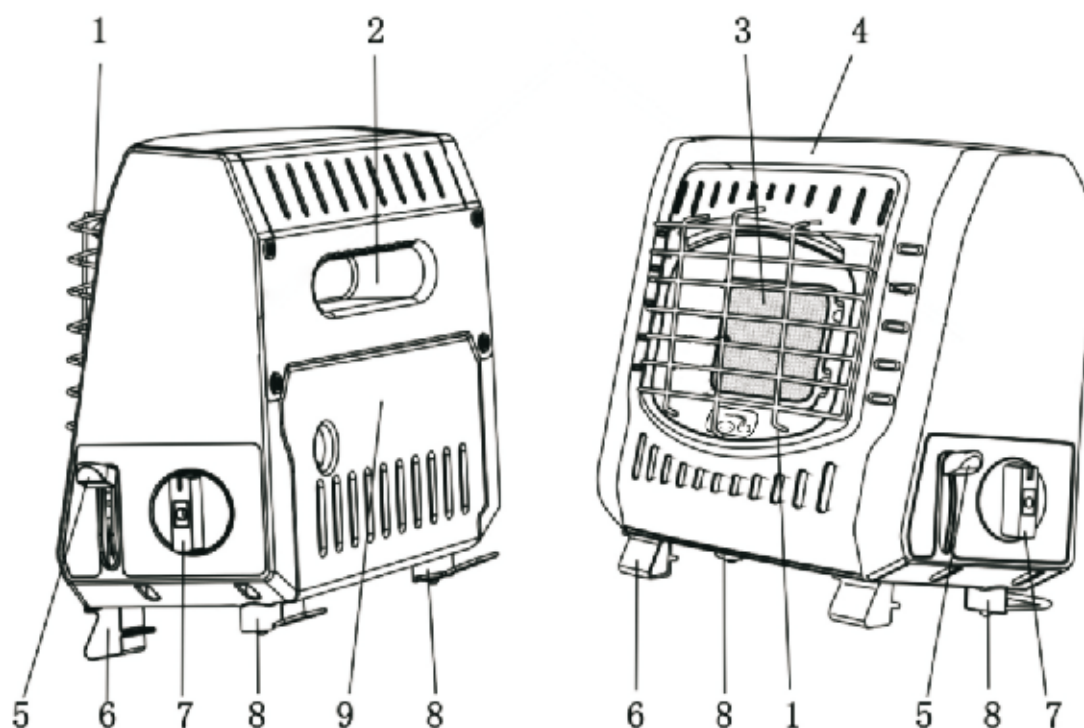
Change the gas container outside and away from people

Check that burners are extinguished before disconnecting the gas container

Country of Destination: All EU members.

We will not accept any liability in respect of any misuse not in accordance with any instructions contained in this booklet.

PARTS LIST



1 Fire Guard

2 Handle

3 Ceramic slate

4 Panel

5 Cartridge lever
(Load ← → Release)

6 Front Foot

7 Control Knob

8 Rear Foot

9 Cartridge Cover

10 Gas Cartridge

11 Notch

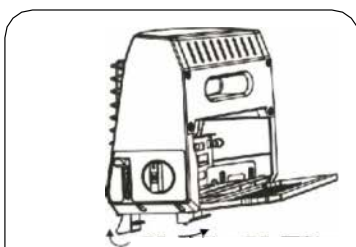


Notes: The gas cartridge is not included and is required to be purchased separately.

OPERATING INSTRUCTIONS

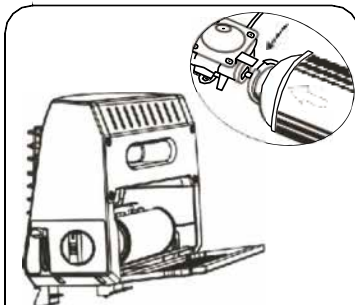
Please read the instruction manual before operating the heater. Failure to follow the precautions and instructions may result in death, serious injury and property loss. Only persons who understand and follow the instructions should use the gas heater.

1



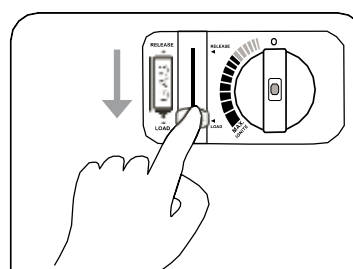
Pull out the four feet. Place the Heater on a steady and flat surface. Make sure that the control knob is at the "O" position and the level knob is at the "RELEASE" position, And then open the cartridge cover.

2



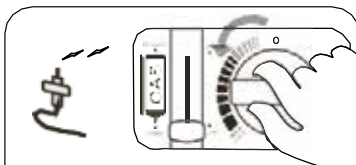
Please use the approved gas Cartridge and fit it in the way shown in the figure on the heater.

3



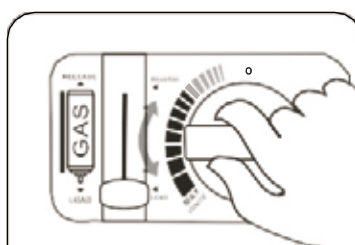
Make sure that the Control Knob is At the "O" position. Press the Cartridge Level button to the "LOAD" position.

4



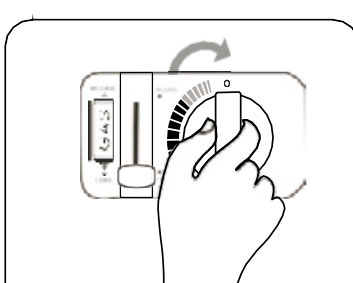
Turn the Control Knob anti-Clockwise to "IGNITE" and until you hear a "click" sound. If the flame is on, then, keep the control Knob at the "IGNITE" position for around 10 seconds to let the FSD take action.

5



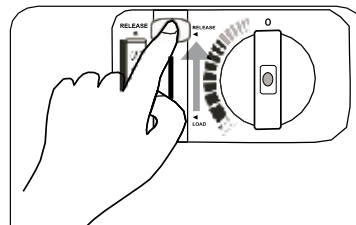
If the flame has failed to ignite, Release the Control Knob and repeat Step 4 again. Turn the Control Knob to a certain position to get an ideal heating output.

6



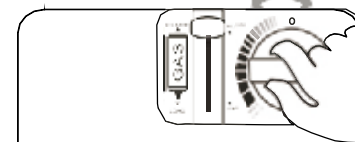
Turn the Control Knob to the "O" position to switch off the gas supply.

7



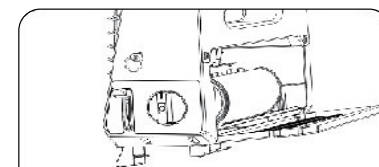
Lift the Cartridge Level button to The "RELEASE" position to release the cartridge and remove it from the heater.

8



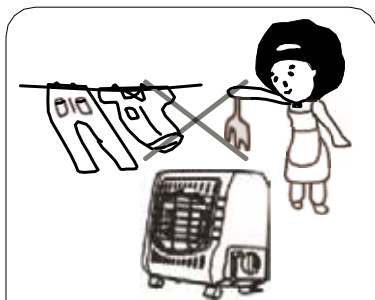
After you take out the cartridge, There should still be some redundant gas inside the gas regulator. Please turn the control knob to the "MAX" position one more time for releasing the gas inside. Turn the Control knob to the "O" position again to end The operation.

9

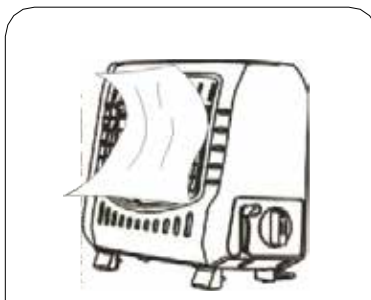


The gas container must be Changed in a well ventilated location, preferably outside, away from any sources of ignition, such as naked flames, pilots, electric fires and away from other people

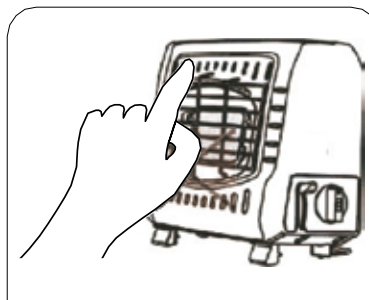
IMPORTANT SAFETY HINTS (whilst operation)

1

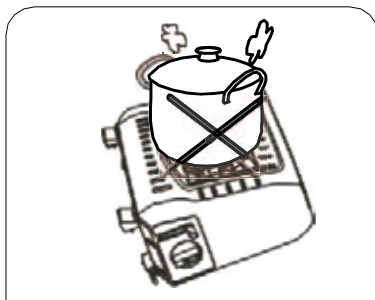
Don't use the heater to dry Clothing or flammable articles. In that case, it may cause accidents, such as fire.

2

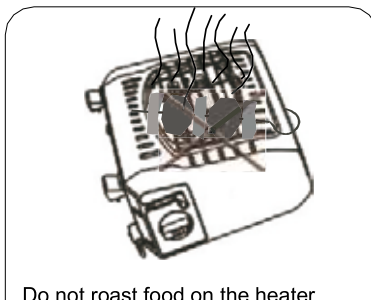
When you are using the heater, Do not cover the heater with any articles/ objects, otherwise, it will cause an accident or fire.

3

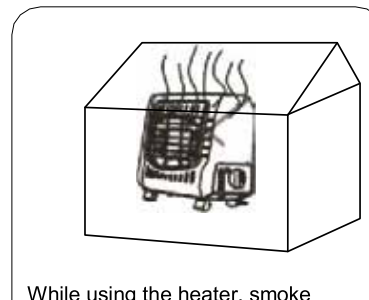
During or after these of the heater, do not touch the hot parts including the panel, wireframe, ceramic slate, until these parts cool down.

4

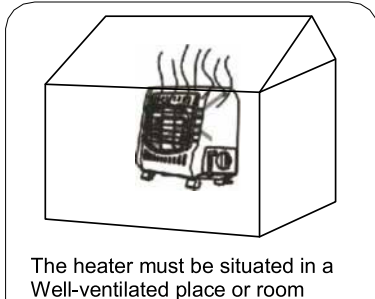
Do not use the heater to cook Food as doing that may cause abnormal phenomenon or accidents.

5

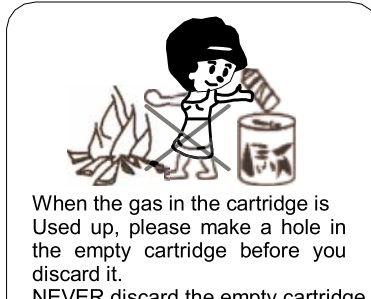
Do not roast food on the heater, Oil and residue may drop into the heater. This will cause malfunctioning of the heater or serious burns.

6

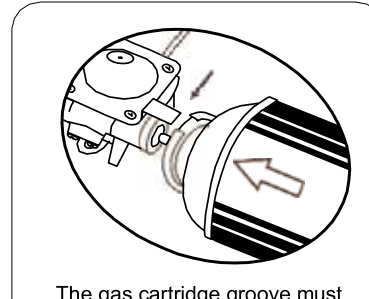
While using the heater, smoke Will be emitted and a high level of smoke may cause people to feel dizzy. NEVER use the heater in an unventilated area or room.

7

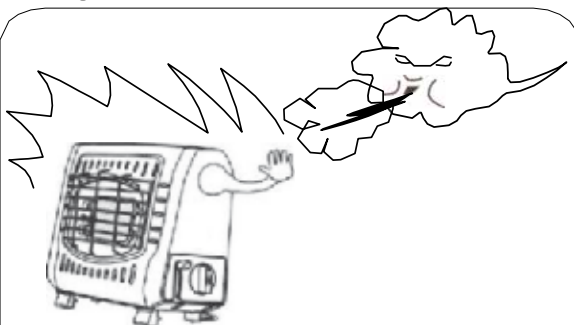
The heater must be situated in a Well-ventilated place or room when the gas heater operates because oxygen will be consumed.

8

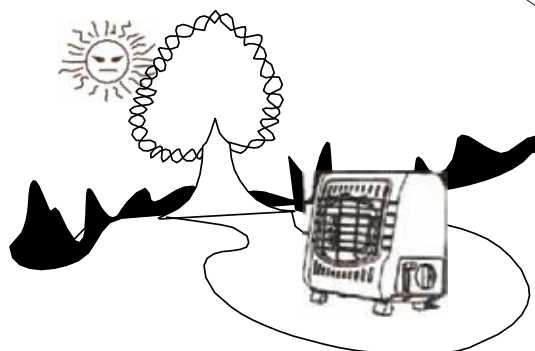
When the gas in the cartridge is Used up, please make a hole in the empty cartridge before you discard it. **NEVER** discard the empty cartridge into the naked fire, near the fire or place it into extreme heat, it could cause explosion.

9

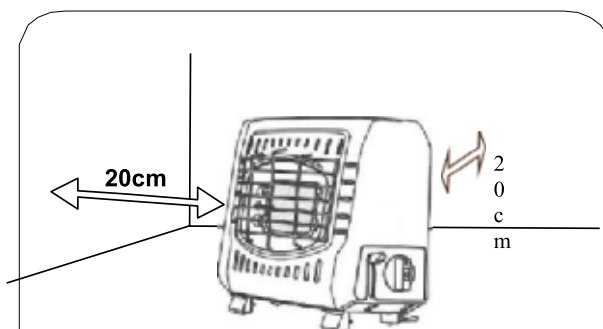
The gas cartridge groove must Be fitted as the above picture illustrated in order to match the guide on the gas regulator.

10

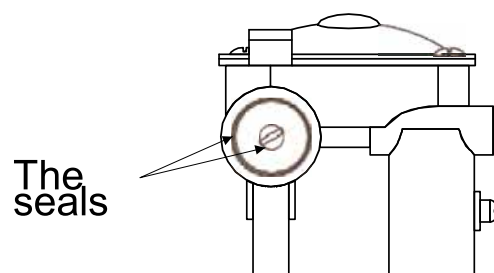
Do not use in windy areas or locations, there will be The risk of the flame being extinguished. Ensure that the gas always remain lit.

11

Do not place the heater in direct sunlight, find a Shady location, away from sand and soil ground.

12

Always place on ahead proof surface away from Inflammable materials. Keep at least a 20 cm distance away from the surroundings.

13

Check that the seals (between the appliance and the Gas container) are in place and in good condition before connecting to the gas container Do not use the appliance if it has damaged or worn seals

ATTENTION:

- (1) Please complete the ignition process in two seconds. Do not do the ignition process for more than three seconds, as it may cause a gas leakage and the flame may be emitted from the heater.
- (2) When the gas cartridge is directly under the sun's radiation, or in high temperature conditions, it will lead to the gas inside to expand and the cartridge will be under pressure. The safety device of the heater will stop the operation. If this happens, please cool down the gas cartridge and reset.
- (3) If using the non-standard gas cartridge, it will cause the heater to fail to operate.
- (4) During operation or after use, please handle the heater with care because some of the parts are hot.
- (5) Keep the gas heater out of reach of children.
- (6) Use the soapy water to check the connection soundness between gas canister and valve. If bubbles are found, do not turn on your appliance, call your supplier.
- (7) Pull out the choke during ignition. If is designed to help fast and easy ignition.

CARE AND MAINTENANCE

Place the gas Heater on a safe steady level surface, keep away from inflammable articles/ objects, e.g. wooden fences or overhanging tree branches...etc.

Please ensure that the appliance has completely cooled down before storage.

DAILY CHECK AND MAINTENANCE

- (1) Please take out the gas cartridge before maintenance.
- (2) Please don't disassemble and reassemble the heater by yourself.
- (3) Please maintain the heater after it cools down.

IF THE HEATER IS NOT IN USE FOR A LONG TIME

- (1) Please take the gas cartridge out.
- (2) Please make sure that the heater does not mildew or rust, keep it dry and clean.
- (3) Put the heater into its case after it cools down; keep it in a dry place.
- (4) Keep the heater and gas cartridge separately.

STORAGE OF THE APPLIANCE

1. Disconnect the gas cartridge after use and in transportation.
2. Never leave or store the butane gas cartridge attached with the heater.
3. Never store the butane gas near heat, naked flames, pilot lights, direct sunlight, or any other ignition sources or where the temperature exceeds 50 degree Celsius.
4. Close the gas cartridge cock with the plastic cap that comes with the packaging.

TROUBLE SHOOTING

Troubles Causes								Trouble shooting
	Cartridge would not install	No gas supply in "MAX" position	Smell gas in "O" position	Low flame	Uneven flame	No ignition Faulty ignition	Extinction in operation	
Ignition knob is not turn to "O" position	●							Turn the control knob completely to the "O" position and reset the cartridge.
Safety device activated		●				●	●	Refer to explanation for safety device.
Ignition knob malfunction		●	●	●		●		Contact an authorized technician for repair
Clogged nozzle		●		●		●		Contact an authorized technician for repair
Cartridge incorrectly installed	●	●	●			●		Ensure that the tab on the regulator is engaged with the notch in the cartridge collar
Clogged burner holes				●	●	●		Use a metal brush to clean it.
Bent or rusty electrode						●		Clean electrode.
No gas		●		●	●	●	●	Replace fuel cartridge.