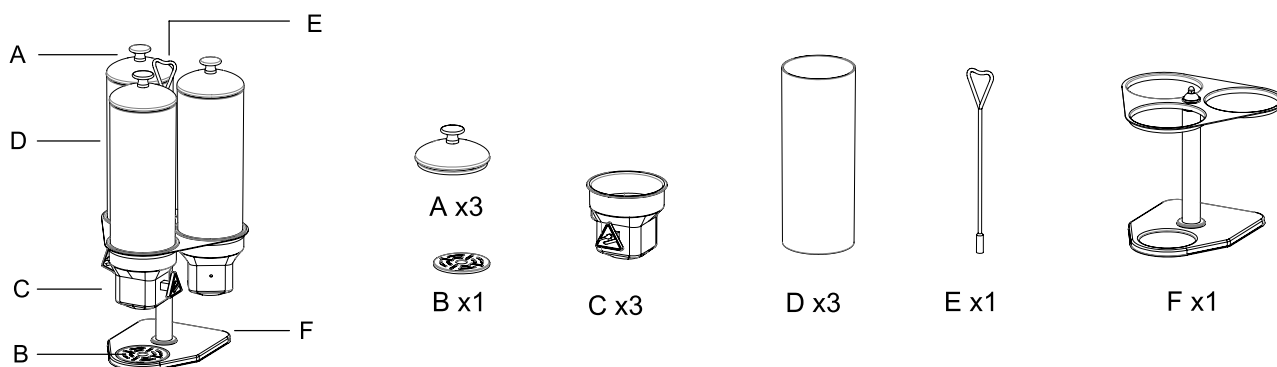
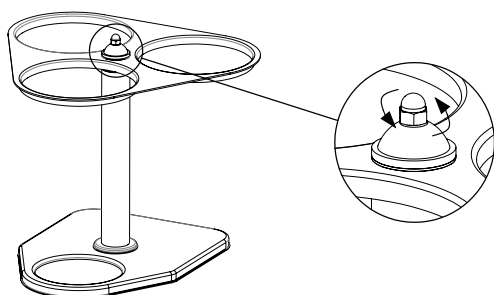


Part List



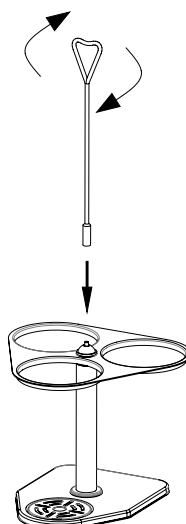
Assembly

1



Step 1: Unscrew the nut counterclockwise

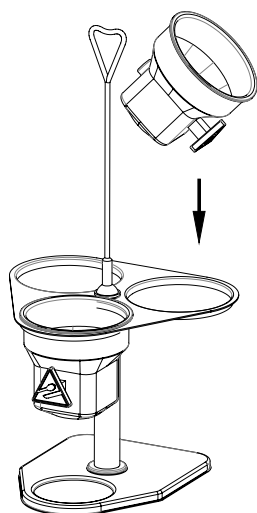
2



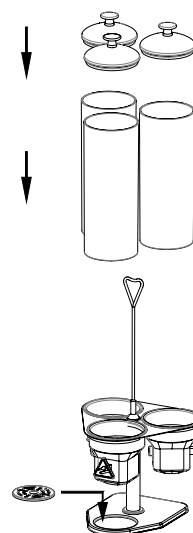
Step 2: Attach the lifting lever (E)
(clockwise)

Note: This handle does not need
to be tightened too much.

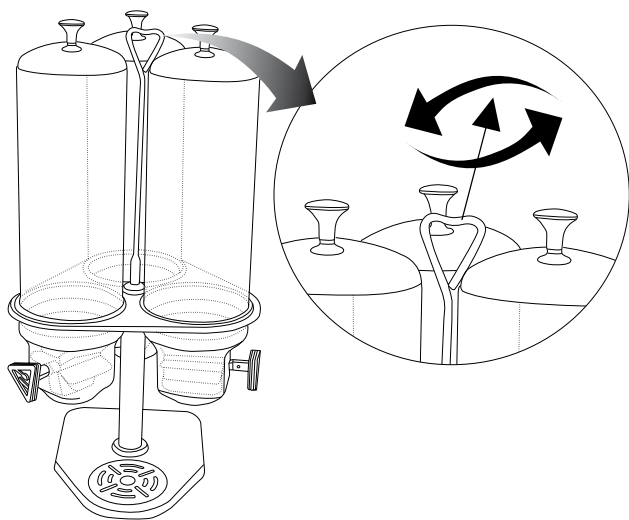
3



4



How to Use

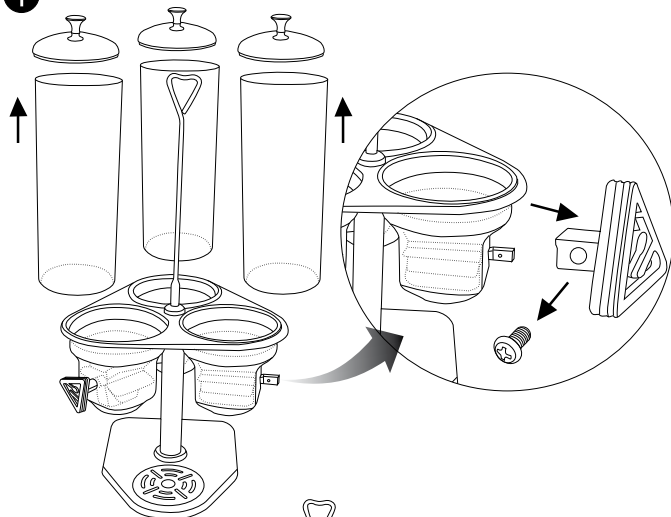


- The speed of the rotation can be adjusted by turning the revolving rod clockwise (to be tight) or anticlockwise (to be loose).

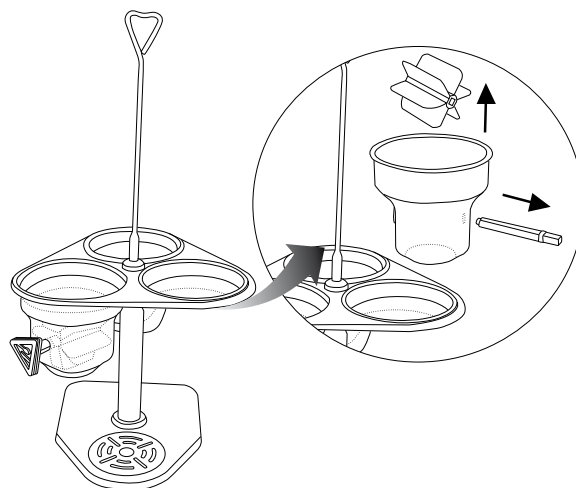
How to Clean

- The plastic cylinders, paddles and paddle covers can be individually disassembled for washing purpose.
- When washing these parts, use mild detergent and rinse them thoroughly in tap water.

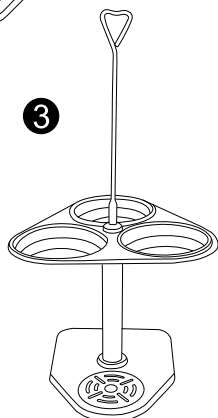
1



2



3



- Do not disassemble any part of the left unit.
- Do not immerse the unit in water and avoid water from spilling into the gap between the revolving rod and the upper revolving platform.
- Only use a clean damp cloth to wipe over the surface.